

# Viking Crash Bar/Engine Guard Installation for Kawasaki Vulcan S:



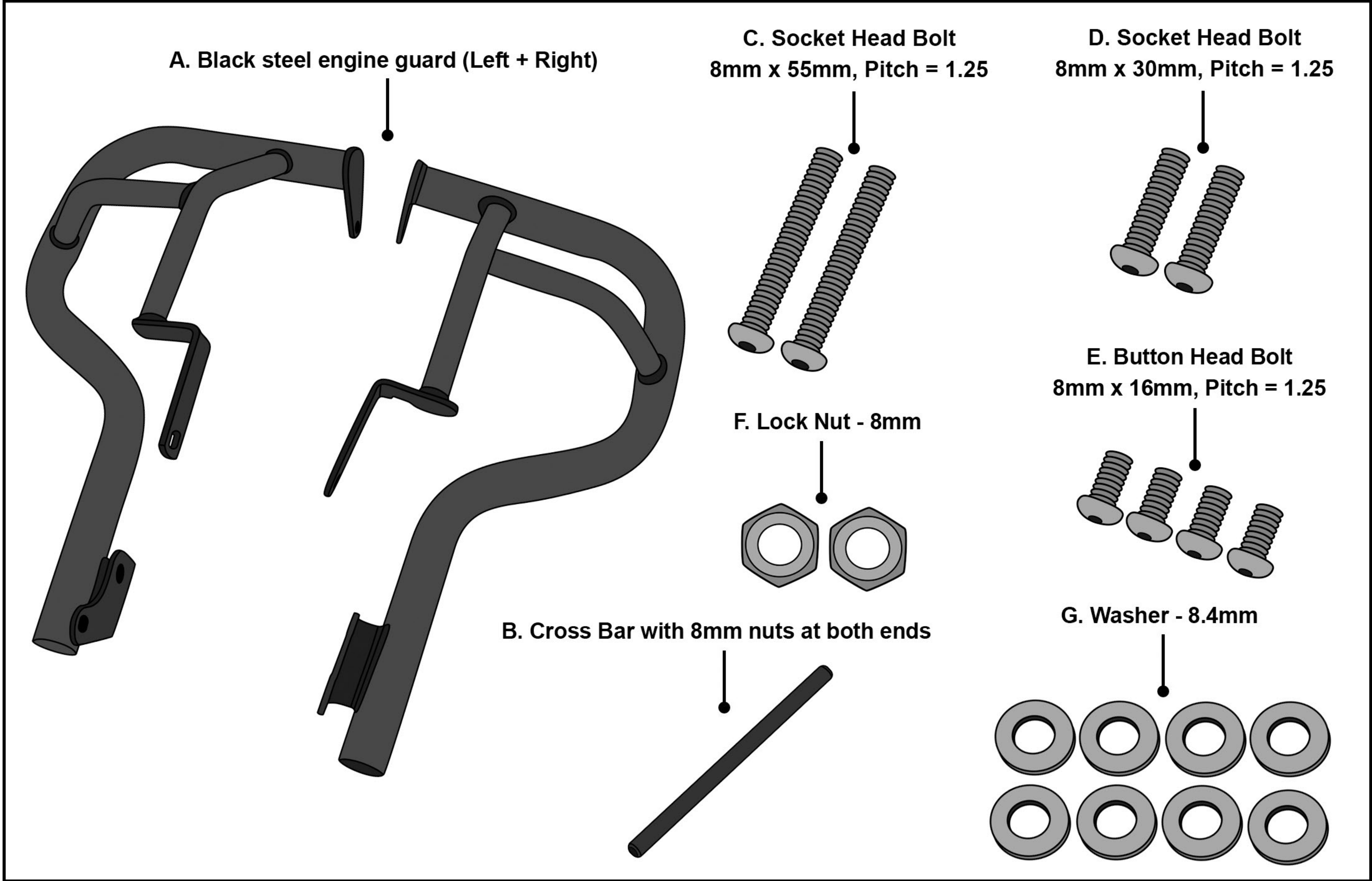
### Parts List:

A	Black steel engine guard (Left + Right)	x1
B	Cross Bar with 8mm nuts at both ends	x1
C	Socket Head Bolt - 8mm x 55mm, Pitch = 1.25	x2
D	Socket Head Bolt - 8mm x 30mm, Pitch = 1.25	x2
E	Button Head Bolt - 8mm x 16mm, Pitch = 1.25	x4
F	8mm Lock Nut	x2
G	8.4mm Washer	x8

### Note:

- i. Turn the handlebars fully to the right and left to inspect for adequate clearance between the engine guard, the clutch, and the brake cables.

### Parts Diagram:



Parts Diagram

### Installation Instructions:

#### Step 1:

Unscrew and remove the motorcycle frame above the motorcycle gear lever on the left. Refer to Fig. 1.



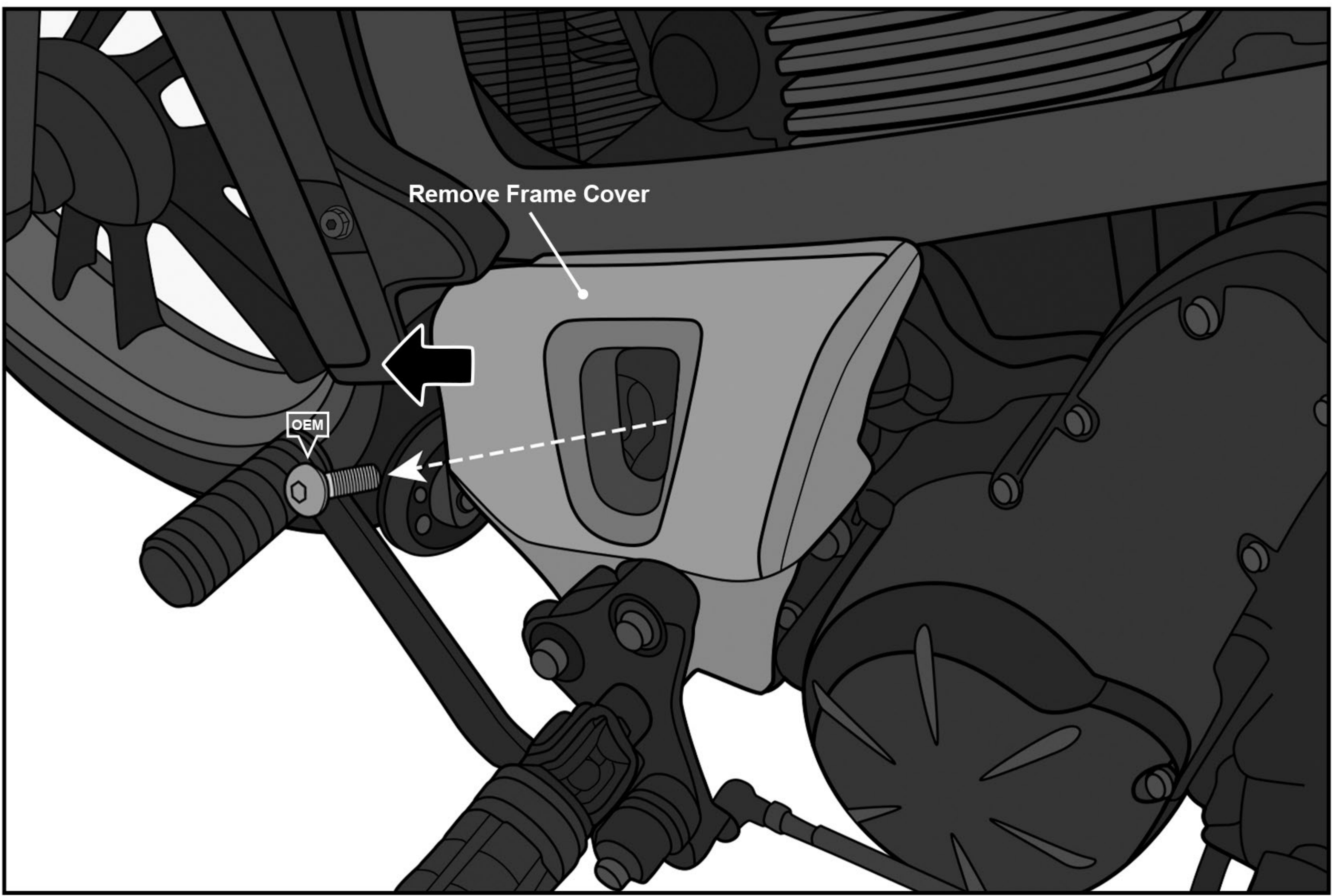


Fig 1. Remove the frame cover (Left Side)

**Step 2:**

Unscrew the OEM bolts from the frame. Refer to Fig. 2.

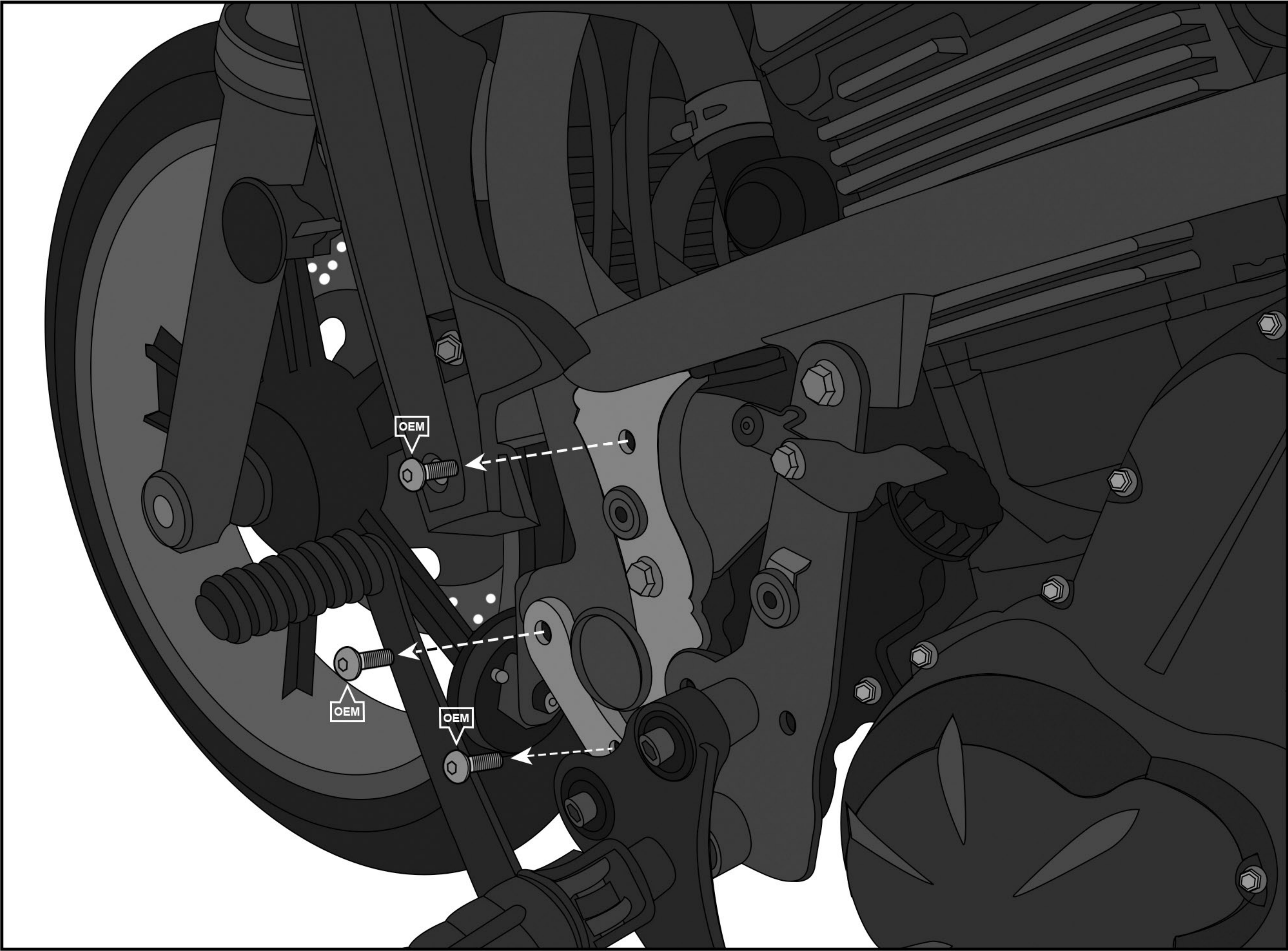


Fig 2. Unscrew the OEM bolts



Step 3:

Put the left crash bar in place, align it with the mounting holes, and install it using the provided hardware. Refer to Fig. 3.

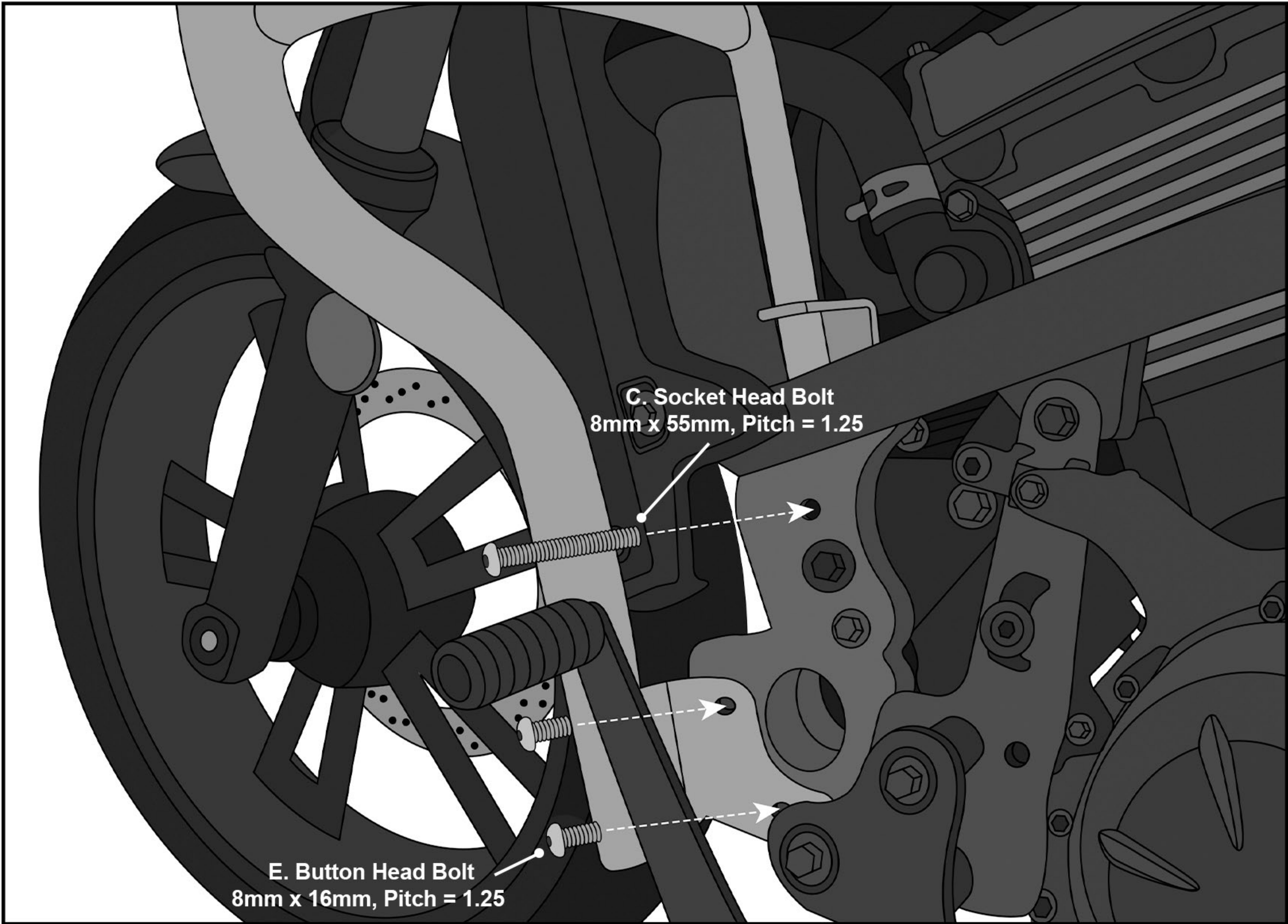


Fig 3. Install the bolts provided in the kit

Step 4:

Unscrew and remove the motorcycle frame above the motorcycle gear lever on the right. Refer to Fig 4.

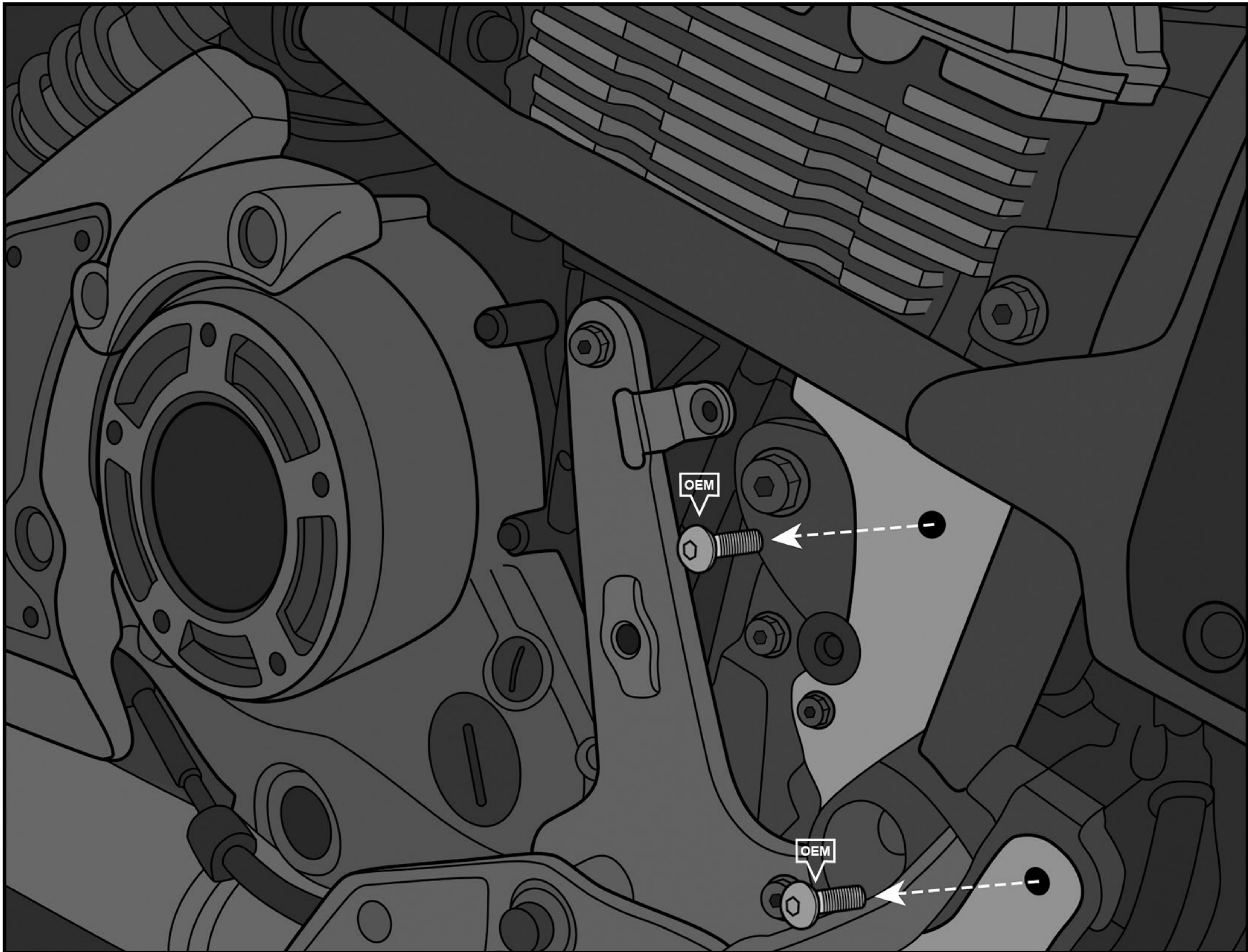


Fig 4. Remove the frame and the OEM bolts (Right Side)

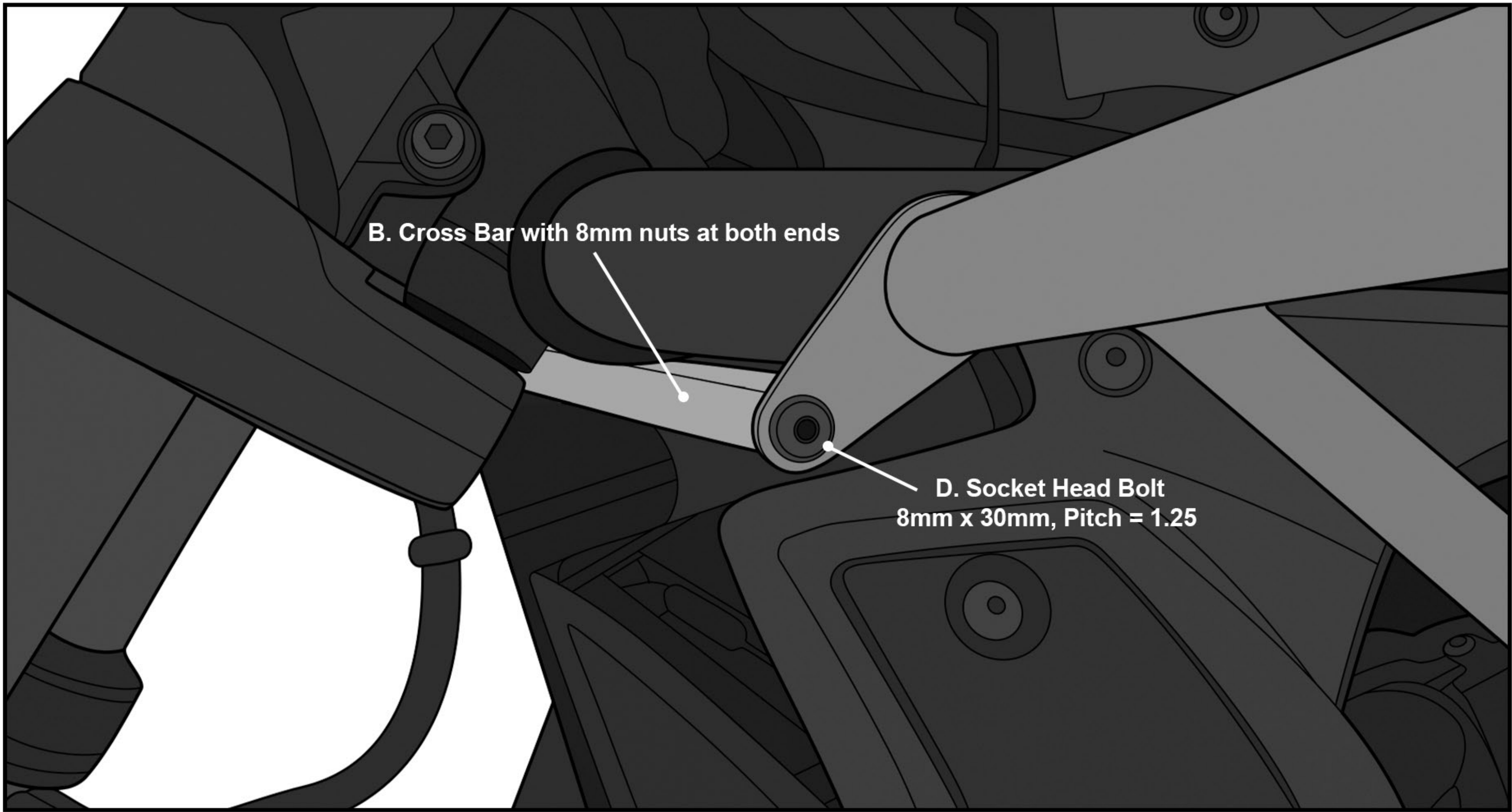


## Step 5:

Put the right crash bar in place, align it with the mounting holes, and install it using the provided hardware.

## Step 6:

Connect both crash bars using the crossbar.



## Step 7:

Make sure bolts are securely installed and tightened. Finally, put back the frame covers that were taken off at the beginning of the installation.

## Note:

Turn the handlebar fully to the right and left to inspect for adequate clearance between the engine guard, the clutch, and the brake cables.

**Congratulations, your Viking Crash Bar/Engine Guard  
is installed and you are ready to ride!**

## Warnings!

- Avoid using any mounting part that is impaired or not working properly.
- Sporadically check for shifting of the bolts and verify that no part of the mounting system is interfering with any part of the bike while riding.
- It is important to note that if you do not mount the engine guard/crash bar properly damage may be caused to the racks and/or motorcycle.
- In case you are unsure about your ability to install the engine guard/ crash bar securely, please seek assistance from a qualified mechanic.
- Viking Bags is not liable for any damage or malfunctions caused to your bike during the installation process.