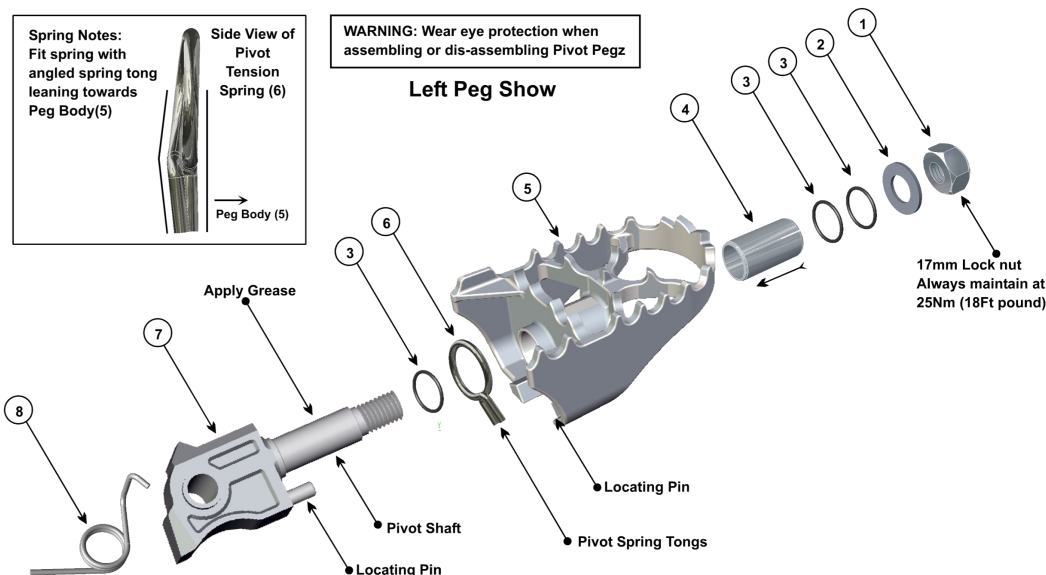




PIVOTPEGZ®

www.pivotpegz.com

Lowering Information

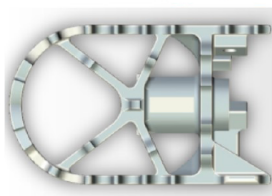


Referring to above diagram, remove 17mm Lock Nut(1) & disassemble Peg. Clean & inspect Peg, renew any worn parts. Po-sition Peg parts as pictured below in 'Lowered Pivot Pegz Configuration' & re-assemble follows. Note: Re-assembly refers to one peg at a time. Lubricate 3 O-Rings. Place one O-Ring(3) over Mount Assembly(7) Pivot Shaft & apply a high quality ex-treme pressure grease where indicated. Position Pivot Tension Spring(6) onto Peg Body(5), see diagram above, make sure that the Locating Pin on the Peg Body(5) is between the tongs of the Pivot Tension Spring(6), hold Spring(6) in position and carefully insert Mount Assembly(7) Pivot Shaft into Peg Body(5). Make sure that the locating pin on the Mount Assembly(7) also passes between the tongs of the Pivot Tension Spring(6). Place two O-Rings(3) over the threaded end of the Mount Assembly(7) Pivot Shaft & position into end of Peg. Place Washer(2) & Lock Nut(1) onto the threaded end of Mount Assem-bly(7) Pivot Shaft & tighten Lock Nut(1) to 25Nm (18 ft pound). Repeat above assembly procedure for other peg.

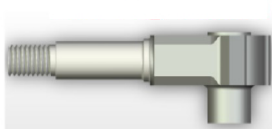
Pivot Pegz Lowering Diagram

Standard Configuration

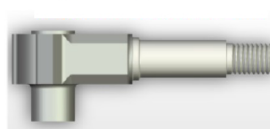
Left Peg Body



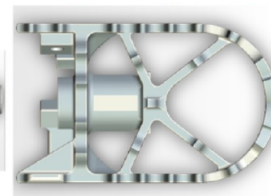
Left Peg Mount



Right Peg Mount

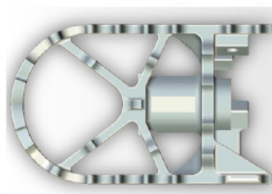


Right Peg Body

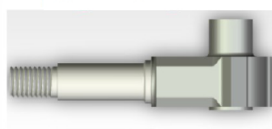


Lowered Configuration

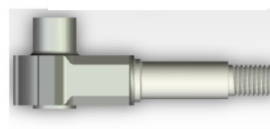
Left Peg Body



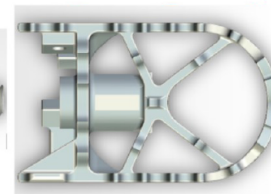
Right Peg Mount



Left Peg Mount



Right Peg Body



These Mounts have been swapped