

Part Number:

KXA00127

KXA00653

Models:

BSVI Hunter

With VIN starting ME3J3D5FEN1



WARNING: Royal Enfield genuine accessories are designed to fit only the specific Royal Enfield motorcycle(s) that are specified above. They should not be fitted to any other type of motorcycle. Pay particular attention to the warnings and cautions contained in this instruction, failure to do so may result in an incorrect installation of the accessory which could result in an unsafe riding condition and possible accident. If in any doubt always seek help from your authorised Royal Enfield dealer.



WARNING: Before starting any accessory kit installation ensure the motorcycle is supported in a stable condition. Failure to support the motorcycle correctly could lead to motorcycle damage or personal injury.



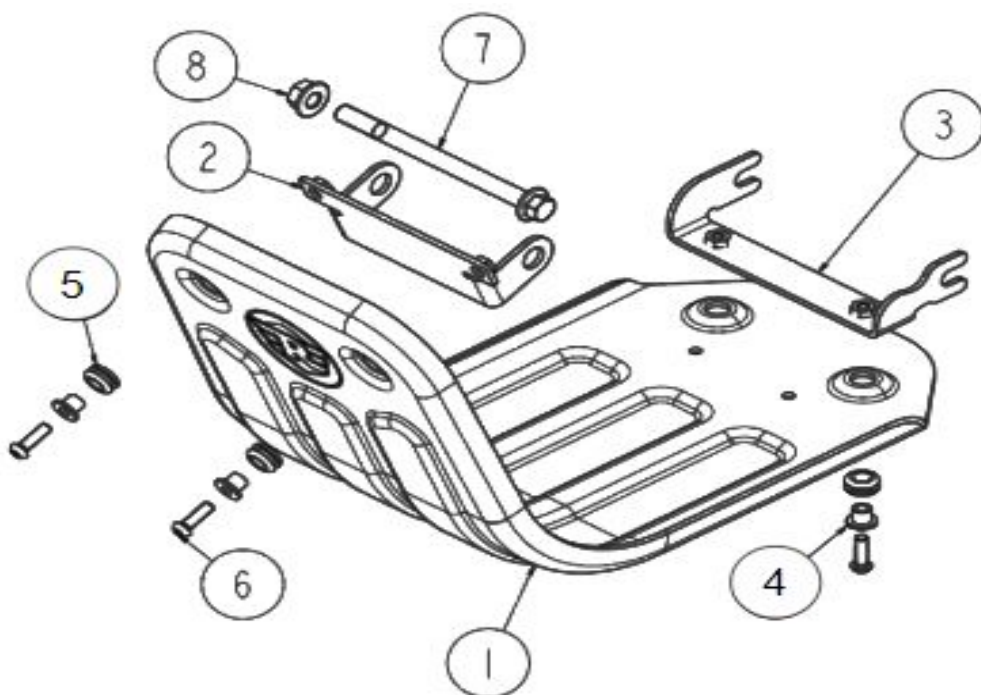
WARNING: All fixings must be tightened to the torque values specified in this instruction. Failure to tighten fixings to the correct torque could result in an unsafe riding condition and possible accident.



CAUTION: Care should be taken when fitting any accessory kit. Incorrect handling of kit components or the use of incorrect tools could lead to component or motorcycle damage.

NOTE: The content of this instruction is subject to change at any time without notice or liability. Royal Enfield reserves the right to revise the information presented at any time.

NOTE: Please note that when fitted, the accessory sump guard may hinder the visibility of the engine number which is stamped on the front of the crankcase. In the event that authorities demand to inspect the engine number, the responsibility to comply rests solely with the customer, which may require removal of sump guard.

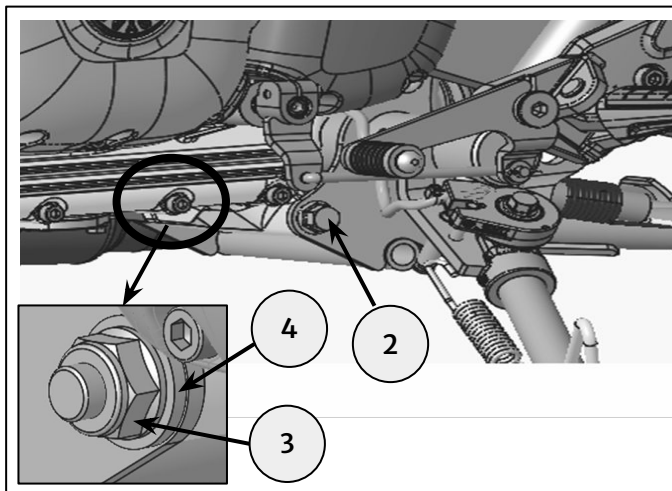


Item	Description	Qty
1	Sump Guard	1
2	Front Mounting Bracket	1
3	Rear Mounting Bracket	1
4	Top Hat Spacer	4
5	Rubber Grommet	4
6	Fixing , M6 x 20	4
7	Fixing, M10	1
8	Nut, M10	1

1 Remove fixing (2), washer (4) and nut (3) from engine mount bottom. Retain fixing (2) and nut (3) for reuse and discard washer (4).



14mm socket and ratchet.
14mm spanner.



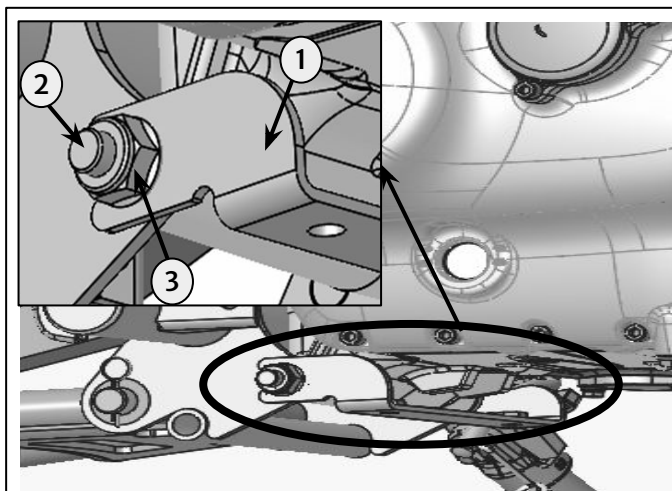
2 Use Rear mounting bracket (1) from the kit, position it parallel to ground as shown. Reuse the fixing (2) and nut (3), from step 1. Tighten to **55Nm**.

As shown ensure to insert fixing(2) from the left side.

Note: If the sump guard is to be fitted with engine guards, follow instructions KXL00146.

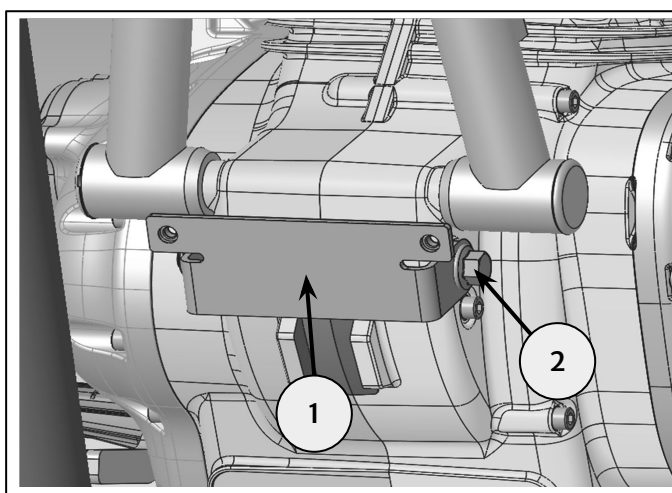
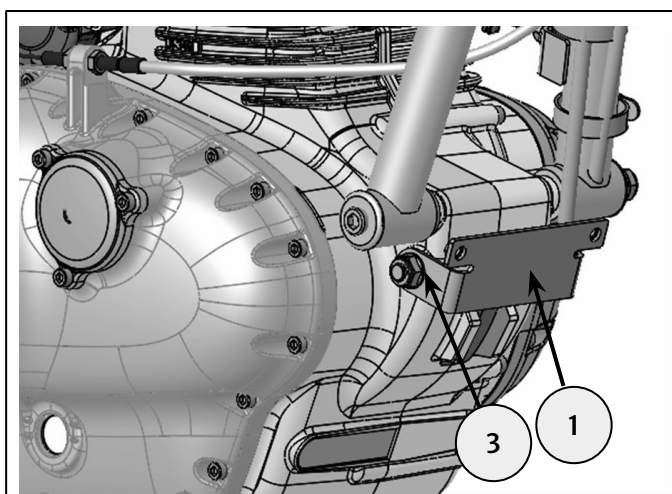


14mm socket and torque wrench.
14mm spanner.

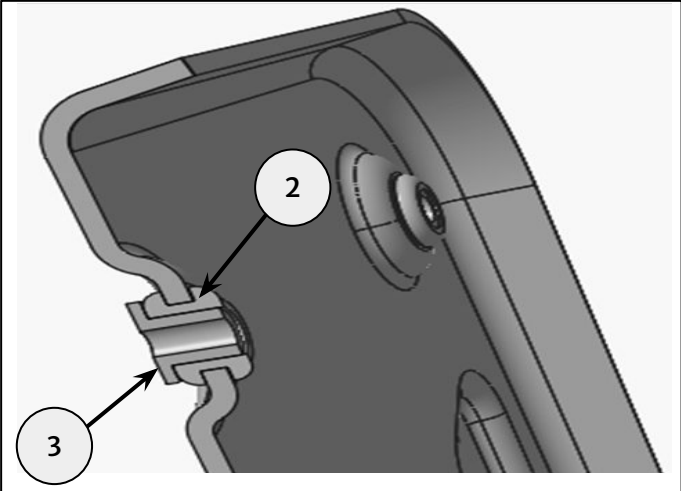
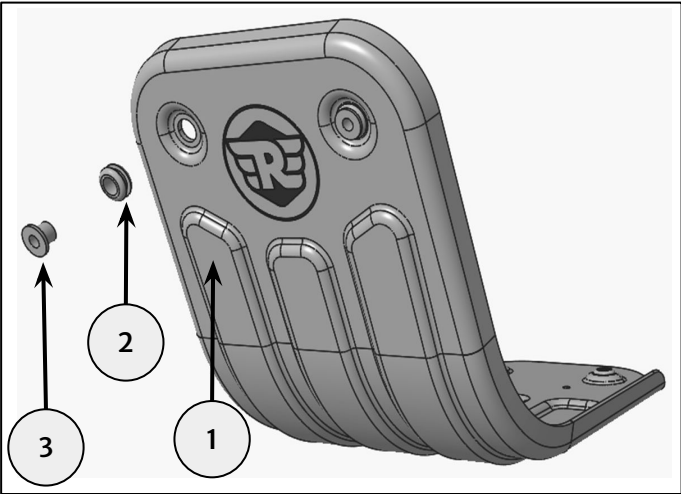


3 Use Front Mount Bracket (1) from the kit, position to Crankcase cast hole, Insert the fixing (2) and Nut (3) from the kit as shown. Slightly tighten the fixing and nut. (Do not fully tighten the fixing and nut at this stage).


As shown ensure to insert fixing (2) from the left side.

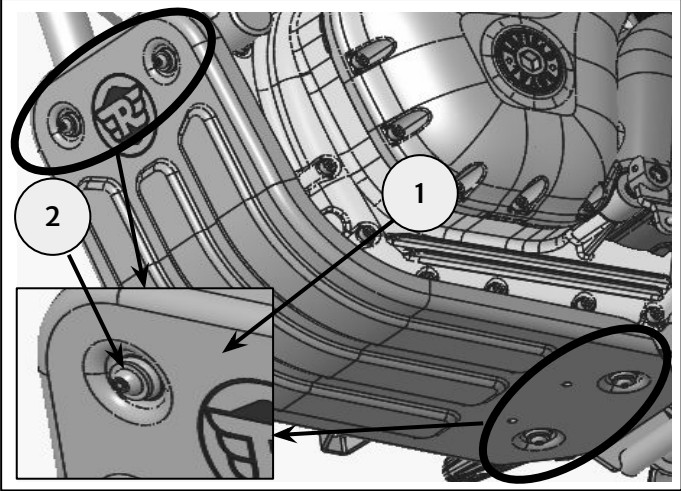


4 Use Sump guard (1), Rubber grommets (2), and Top hat spacers (3) from the kit. Insert rubber grommets to the sump guard mount holes as shown,(ensure rubber seats correctly on both sides). Insert top hat spacers (3) to the rubber grommets. Ensure flange is on the front face of the sump guard.




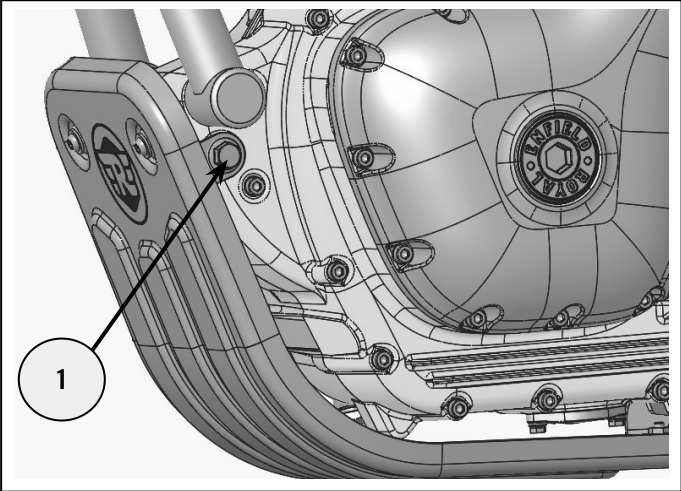
5 Place sump guard (1) on the brackets. Position mount holes . Use fixings (2) from the kit, tighten to **8Nm**.

	4mm hexagonal bit and torque wrench.
--	--------------------------------------



6 At this stage, Tighten the fixing (1) to **55Nm** on the front mount bracket area.

	13mm socket and torque wrench 17mm spanner.
--	--



7 Check operation of all controls, including gear and brake pedals for clearance to the sump guard before starting the vehicle.



WARNING: After fitting any genuine Royal Enfield accessory always ride the motorcycle with caution and allow time to become familiar with any change in the motorcycle handling characteristics. Failure to become familiar with any change in the motorcycle handling characteristics may cause the motorcycle to become unstable and result in an accident.