



SPARES FOR ROYAL ENFIELD AND AMAL

EMAIL: info@hitchcocksmotorcycles.com

WEB: www.hitchcocksmotorcycles.com

HITCHCOCK'S MOTORCYCLES LTD
ROSEMARY COURT
OLDWICH LANE WEST
CHADWICK END
SOLIHULL
B93 0EY ENGLAND

TELEPHONE: 01564 783 192

650 Rear Mudguard 60's Style - 92314C



1. Remove seat, original rear mudguard and light unit. Remove rear indicators (noting which side they came off).



4. The 6mm x 16mm bolts screw into the top of the rubber mounts re-using the original flat washers.



7. Insert the new grommet at the taillight end.



2. Push wiring holders into mudguard and put the zip ties loosely in ready for the loom taillight cable.



5. Insert the loom taillight cable into mudguard hole.



8. Retaining the original mudguard grommets in the frame, then offer up the mudguard with the two new rubber mounts.



3. Fit the rubber mounts to the mudguard with the flat steel washers and the nyloc nuts underneath.



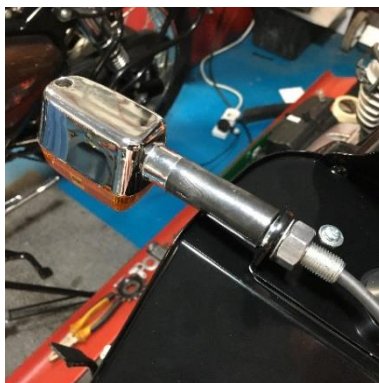
6. Insert the original mudguard grommet into new mudguard.



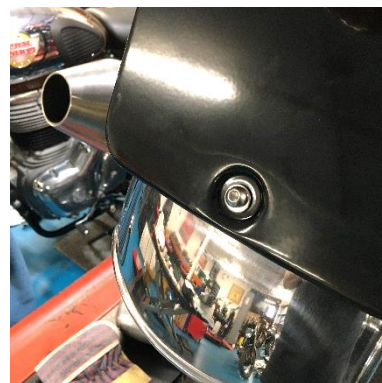
9. Loosely assemble the two 6mm x 16mm bolts through the frame and into the rubber mounts so you can move the mudguard to line up with the tail mounting hole.



10. Use the M6 button head screw through the frame hole and the mudguard with the flat washers/nyloc, then tighten the button head screw and the two bolts.



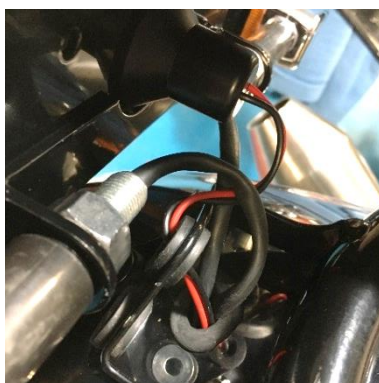
14. Just use the M12 nuts and shakeproof washers instead.



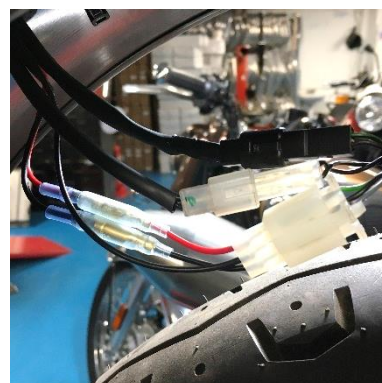
18. And one M6mm x 16mm button head and washers at the bottom.



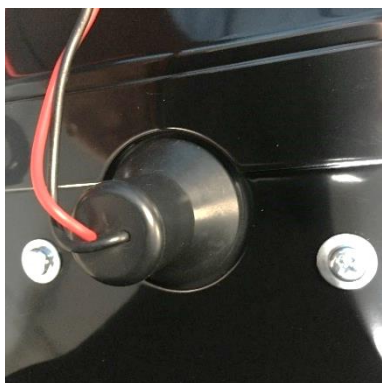
11. Screw light unit to bracket.



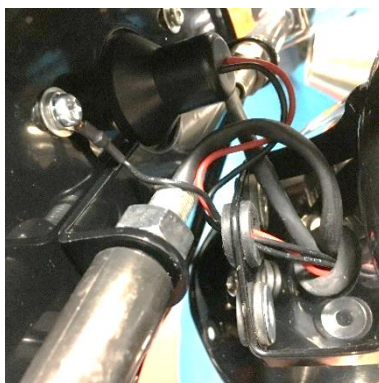
15. Pass the light and indicator wires through grommet in centre of rear bracket down to the mudguard underneath.



19. Under the mudguard thread the loom through the heat shrink and connect the new connector to the loom and connect the indicators.



12. Using supplied screws that come with the light.



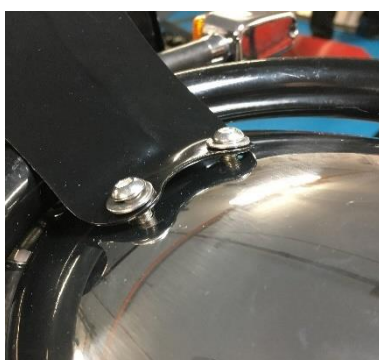
16. Attach the new block connector underneath and pull the earth wire through the hole and attach to one of the taillight screws using the small shakeproof washer.



20. Pull the excess wiring back through towards the panel area. Use the heat shrink, cable ties and wiring holders, ensuring a tight fit along the underside of mudguard.



13. Fit the indicators to the bracket, but don't use the plastic extensions.



17. Bolt bracket to the mudguard, using two M6mm x 16mm button heads and washers at the top.



21. Test the lights function as they should and then refit seat.